

PALFIQUE
OmniCHROMA[®]

Every shade. One choice.



**Unprecedented Color Matching
with ONE SHADE Composite**

PALFIQUE OMNICHROMA®

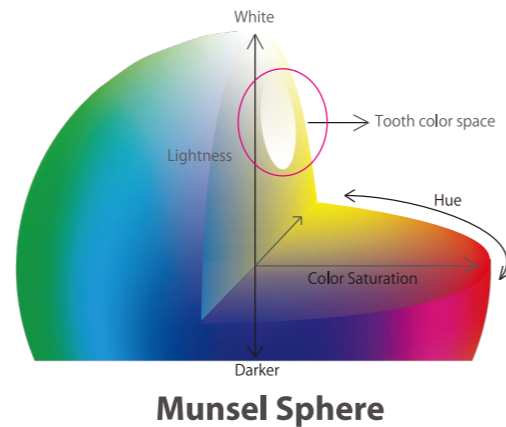
PALFIQUE OMNICHROMA is the world's first universal composite that esthetically matches almost all patients with a single shade. Its uniformly sized supra-nano spherical fillers allow PALFIQUE OMNICHROMA to match every shade, a science that we call Smart Chromatic Technology. Its wide color-matching ability eliminates the shade-taking procedure, reducing composite inventory and saving doctors time and money.

Technical Background

TOOTH COLOR

All smiles have something in common, and that is the colors that make up human teeth shades. All shades of teeth express a narrow range of red-to-yellow color. The Munsell Sphere on the right demonstrates the color range of teeth.

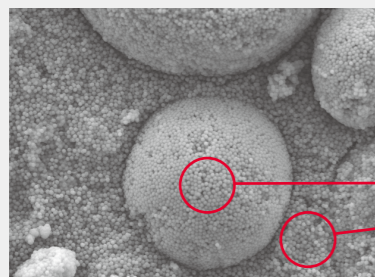
To match every smile, most composite brands require multiple shades. That's because most composites today depend on the color of red and yellow dyes added to the resin material to emulate tooth shades. This means that dentists must keep a large inventory of different composites to accommodate a variety of patients.



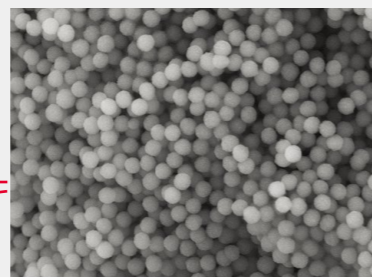
SMART CHROMATIC TECHNOLOGY

PALFIQUE OMNICHROMA exhibits the ultimate wide-range color-matching ability thanks to Tokuyama's Smart Chromatic Technology. The Smart Chromatic Technology is achieved by Tokuyama's uniformly sized 260nm spherical fillers included in PALFIQUE OMNICHROMA. Structural color occurs when different wavelengths of light are amplified or weakened by the structure of a material itself, expressing colors other than what the material may actually be.

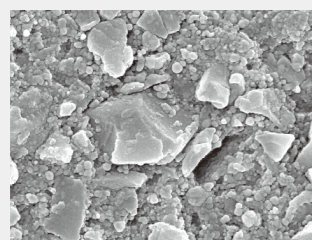
Tokuyama's Uniformly sized spherical fillers



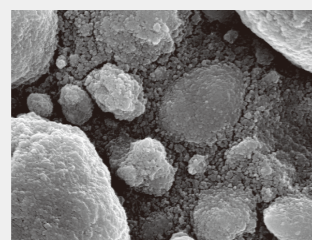
SEM Image of PALFIQUE OMNICHROMA at 5,000x Magnification



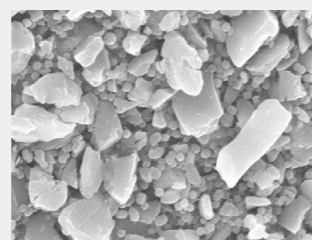
SEM Image of PALFIQUE OMNICHROMA at 20,000x Magnification



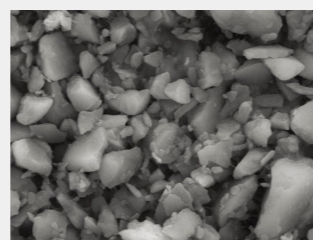
Herculite™ Ultra



Filtek™ Supreme Ultra

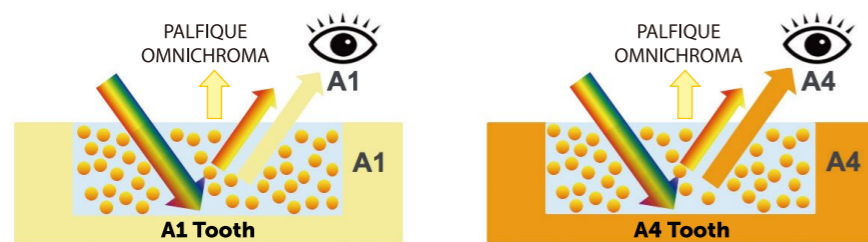


Tetric EvoCeram®



TPH Spectra® ST

PALFIQUE OMNICHROMA utilizes structural color with its 260nm spherical fillers. The fillers are the exact size and shape needed to generate red-to-yellow color as ambient light passes through the composite, without the need of added pigments or dyes. This red-to-yellow color generated by the spherical fillers combines with the reflected color of the patient's surrounding dentition, creating the perfect match for almost every shade.



Excellent color match Restored using PALFIQUE OMNICHROMA

FEATURES & BENEFITS

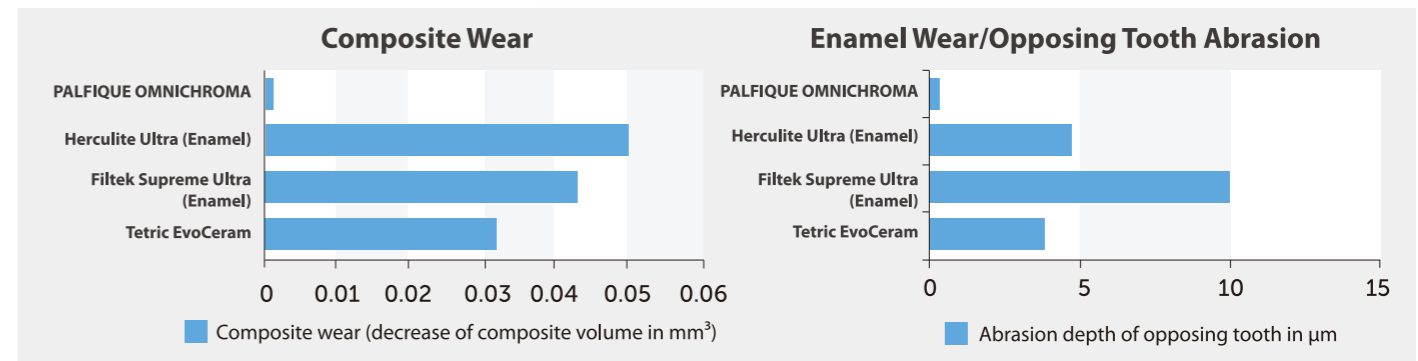
- Unprecedented shade-matching ability and esthetics
- Minimized chair time and reliance on shade-matching procedures
- Exceptional handling, polishability, and strength
- Reduction of inventory of necessary composite shades
- Reduction of expired composite



CHARACTERISTICS

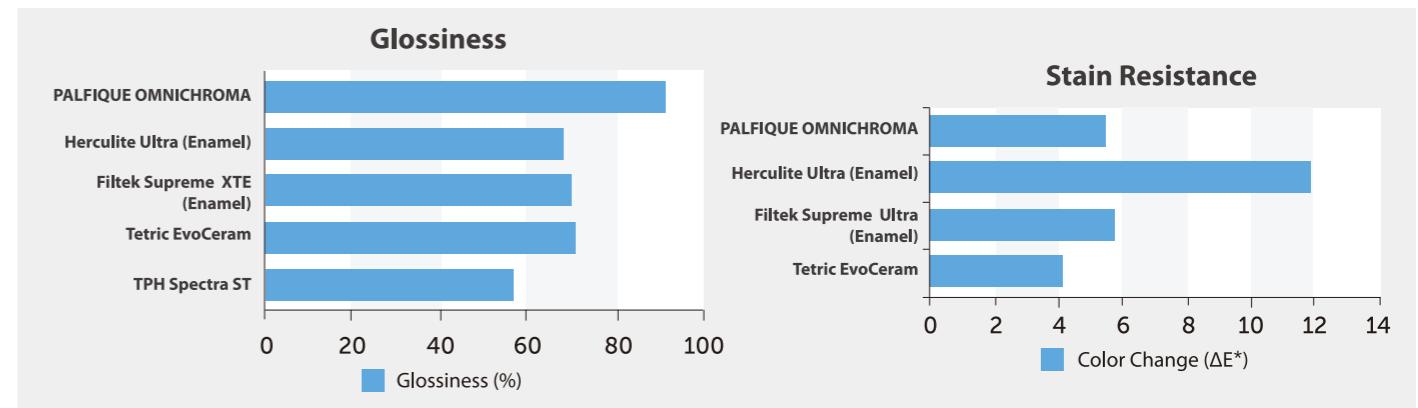
Minimal Wear

PALFIQUE OMNICHROMA excels in minimizing wear in both the composite itself and in abrading opposing dentition, resulting in long-lasting restorations.



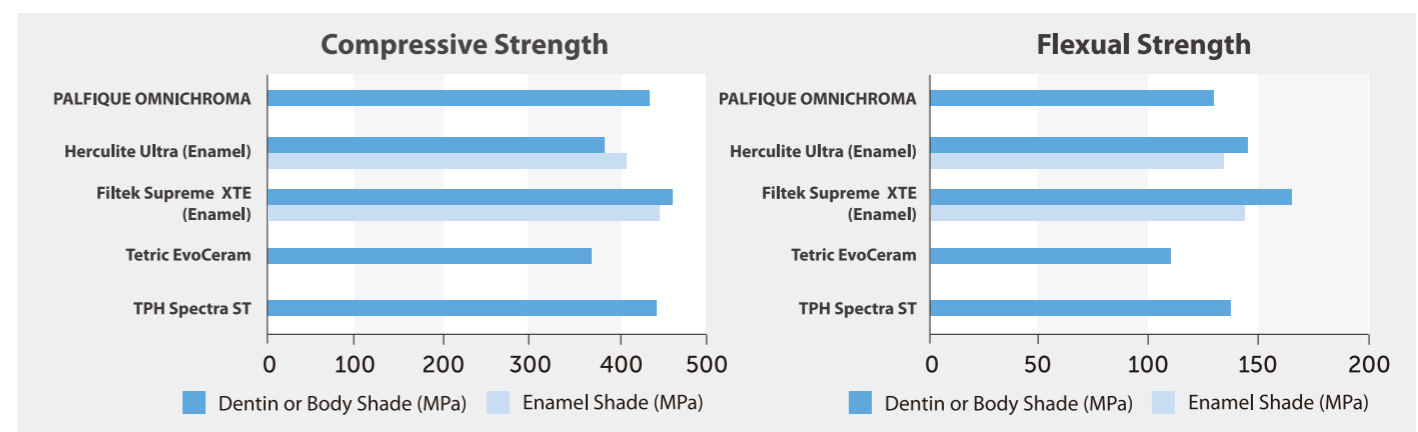
Esthetics

PALFIQUE OMNICHROMA produces extremely glossy results and maintains its cured color very well, resisting the effects of staining on its appearance.



High Strength

PALFIQUE OMNICHROMA's compressive and flexural strength is equal to or exceeds other commercially available composites, assuring dentists that patients can bite with confidence.



CLINICAL PROCEDURE

PALFIQUE OMNICHROMA

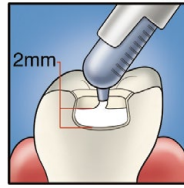
POSTERIOR



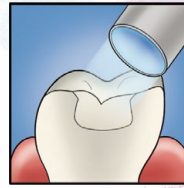
Preparation: Add chamfers to help eliminate margin visibility and aid shade matching.



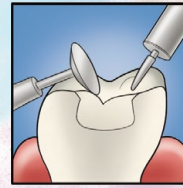
Apply bonding agent.



Fill with PALFIQUE OMNICHROMA.

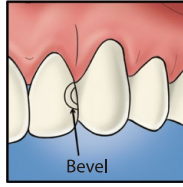


Light cure. (Curing time varies depending on intensity of curing light.)

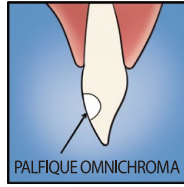


Finish and polish.

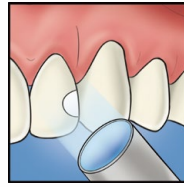
ANTERIOR



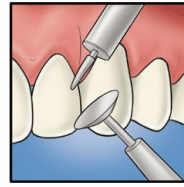
Preparation: Add bevels to help eliminate margin visibility and aid shade matching.



Apply bonding agent and fill PALFIQUE OMNICHROMA.



Light cure. (Curing time varies depending on intensity of curing light.)



Finish and polish.

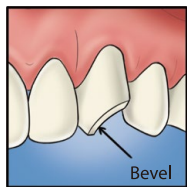


Note: PALFIQUE OMNICHROMA appears opaque-white before curing, allowing for higher visibility and easier placement. It becomes the perfect match to the surrounding tooth after curing.

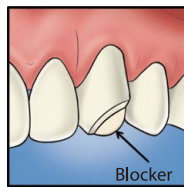


PALFIQUE OMNICHROMA BLOCKER

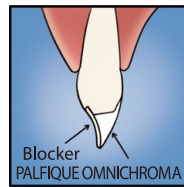
PALFIQUE OMNICHROMA BLOCKER is used as a lingual layer for large Class III or Class IV restorations with limited surrounding dentition. After applying and curing PALFIQUE OMNICHROMA BLOCKER, PALFIQUE OMNICHROMA is applied as the second layer. PALFIQUE OMNICHROMA BLOCKER can also be used to mask slight staining, or to reconstruct a highly opaque tooth.



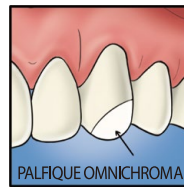
Preparation and apply bonding: Add chamfers or bevels to help eliminate margins and aid shade matching.



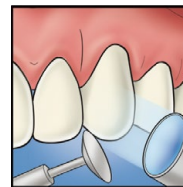
Apply BLOCKER as a lingual layer. Thickness of the lingual layer can vary, but 0.5mm is illustrated as a guide. Light cure*.



Apply PALFIQUE OMNICHROMA as a secondary layer.



Note that PALFIQUE OMNICHROMA is opaque white before curing. It blends naturally after curing.



Light cure*, finish, and polish



*Curing time varies depending on intensity of curing light.

Read all instructions, information, precautions, and notes in IFU before use.

AVAILABLE PRODUCTS

PALFIQUE OMNICHROMA

Contents: 1 - 4g (2.2mL) syringe



PALFIQUE OMNICHROMA BLOCKER

Contents: 1 - 4g (2.1mL) syringe



Specifications are subject to change without obligation on the part of the Manufacturer.

Manufactured by

Tokuyama Dental Corporation

38-9, Taitou 1-chome, Taitou-ku, Tokyo, Japan

TEL: +81-3-3835-2261 FAX: +81-3-3835-2265

URL: www.tokuyama-dental.com

